

# The DRS 2006 Webreceiver

Welcome to the latest and best free web radio receiver from DRS 2006. With more than listening power, this small program allows you to record what you hear for future reference. We must point out that we cannot be held responsible for those who record copyright material without permission.

## Installing the DRS 2006 Webreceiver

Unzip the Webreceiver with a known unpacking utility, and follow the instructions onscreen. Now you may start the program from the Start Menu/Programs list.

The first time it opens a GUI (Graphic User Interface) opens displaying the standard interface which contains several buttons and displays.



On the left hand side you will see a box which has been filled by default allowing you to listen live to the DRS 2006 Demo Streams, in 2 formats, accommodating almost everyone. By left clicking on one of these it will connect to our server and begin broadcasting our stream, at the quality you choose.

Beneath these are 5 more empty slots, allowing you to input your own stream data, either your own stream or your local radio stations stream it's your choice.

How you input is quite simple, right click with your mouse on an empty slot, and input the name of the station and the URL of the stream. Save & Exit. Then left click on the newly inputted station and it will connect, providing you have correctly set the URL. An example may be

<http://rs10:radiostreamer.com:16000>

Please be sure to leave away the "listen.pls" in the URL of ShoutCAST streams.

### Edit Radio Station

Name (any name):

URL:

URL examples:  
ShoutCast: http://server:port (no pls files!)  
Windows Media: http://server/PublishingPoint  
or: http://server/filename.asx

You are not limited to only 5 slots in which to insert your own links. Choose station Band (right top) with the cyan arrows. This allows you to move down the list of empty slots, giving you an additional empty slots.

Choose Station Band – Clicking on this allows you to assign groups or station bands to your streams, for example a group may be Techno, rock or pop. By clicking your choice of band it will automatically display those related streams in the band.

### Choose Station Band

- Alternative
- Blues-Jazz
- Christian
- Classical
- Country
- Dance-Techno
- DRS 2006 Radio Network
- Folk
- Heavy Metal
- News
- Oldies
- Others - Favorites
- Others - New
- Police
- Pop-Rock
- Reggae

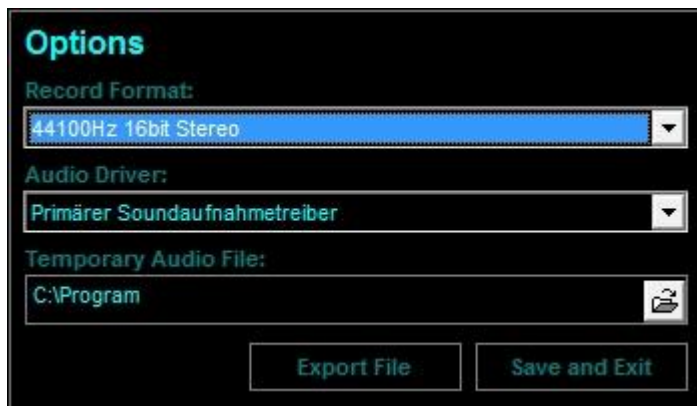
Enter new Station Band:

Station History – Clicking this will bring up your most recently visited stations for quick retrieval of your favorites.



### Recording with the Webreceiver

Below the above box is the sound recording utility. This will record in WAV format. Using the options button you can change the options relating to the quality of the recording.



### Options

Record Format – Ranging from 96000 Hz 16bit Stereo to 8000 Hz 8bit Mono.

Audio Driver – This is the location of your soundcard and can be set here. Usually it will set to default.

Temporary Audio File – Here you can set the location to record your stream or leave it as default.

Export File – This neat little feature allows you to export your recorded file to another location in WAV format preventing you accidentally recording over the default temporary webfile.wav.

Above the recording options (Stop, Rec & Play) is a numerical indicator of the length of your recording, its position and most importantly size.



Below the station band is the mixer control, this slider or fader acts as your volume control, it is not advisable to alter this during a recording, but only if you are listening. The disc to the left will spin when connected to a stream.



Below this is a set of buttons for more access to the features.



DRS 2006 – Will link you directly to our website.

Disconnect – As it sounds, disconnects the stream.

Skin Designer – This cool feature allows you to set the colors of your Webreciever, pop up box colors, button colors. (Passive and Active). Text display allows you to change the text that scrolls across the interface. Here also you may choose one of the other skins we have provided with the webreceiver or indeed make your own.



How? Design your skin, save it as a .bmp, insert it into the Default Webreceiver folder, from there you can load the image. Then you must adjust the various displays to fit your new skin. To do this right click on the GUI itself and choose an option; for example, Drag and Drop Display will let you adjust the scrolling text box to fit your image once you are happy with its position once more right click and Drop Current Object. Repeat these steps until the display and functions fit your new design perfectly. Then you may return to skin designer and save this skin. Please remember Load Skin will load a default skin or one you saved and Image will load a new image were quite possibly you will have to adjust the displays.

Options – (See Recording with the Webreceiver)

About – About the player.

Exit ;-)

The remaining display shows the current station name, time, bandwidth, any buffering and how long you have been connected to the stream.

### Need more information?

If you have any further questions, please feel free to contact our DRS 2006 Help Desk at <http://helpdesk.drs2006.com> or send us an email to [support@drs2006.com](mailto:support@drs2006.com)